

# Learn How You Can Use the Caribbean GeoPortal



**Get Answers:** Questions will be answered in dedicated sessions throughout. You can submit them at anytime through the Q&A module.



**On-Demand:** The recording will be posted shortly after the webinar. You'll receive an email with the link to view or download.

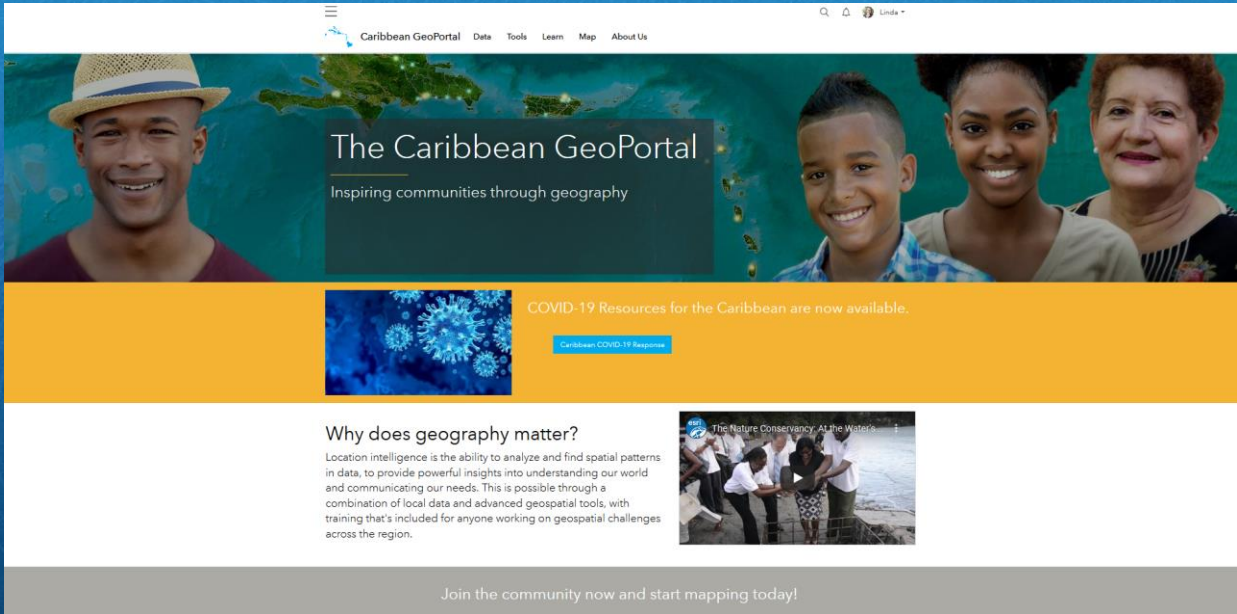


**Start time:** The webinar will start at 7:00 am Pacific



**Contact us:** For anything else, please email us: [kelleymoreno@esri.com](mailto:kelleymoreno@esri.com)

# Learn How You Can Use the Caribbean GeoPortal



Caribbean GeoPortal





# CARIGEO

Caribbean Geospatial  
Development Initiative

---

**GEO-EMPOWERING THE CARIBBEAN**

an Initiative implemented by the Americas Regional Committee of  
United Nations Committee of Experts on Global Geospatial  
Information Management (UN-GGIM)

# Today's Presenters



**Simone Lloyd**

*Senior Geographic Information Systems  
Manager & Trainer*

National Spatial Data Management  
Branch/ Land Information Council of  
Jamaica



**Sean McGinnis**

*GeoPortal Program Manager*  
Esri



**Roshaun Clarke**

*Deputy Chief Executive Officer*  
Spatial Innovision Limited



**Taiwo Ogunwumi**

*GIS and Information Management  
Specialist*  
UN Migrations, Nigeria

# Agenda

Introduction

Why is this important to the community?

Overview

What is the Caribbean GeoPortal

Discussion

Where do I start?  
What can I do?  
How do I get access?

Hands on

Set up an account  
Join the community

Case Study

Putting the tools to work

Conclusion

Resources  
Questions

# Why is this important to the Caribbean community?

Simone Lloyd

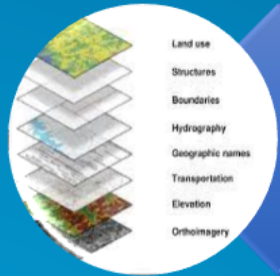
Caribbean is a diverse region comprised of over 700 islands, islets, reefs and cays that surround the Caribbean Sea and lie on the Caribbean Tectonic plate

Diverse given historical setting, geographical location, geological setting, etc.

Issues:  
socio-economic, climate change, hydrometeorological, geomorphological and health hazards etc.



# Importance to Caribbean Community



Opportunity to examine and assess Caribbean issues via upload and access to relevant, current, complete and accurate geospatial data and technology



Analytical tools and web services are freely available to the community for anyone doing work in the region.



open mapping community across the Caribbean with open data hosting for governments that want to contribute their data to the community at no cost.



# Importance to Caribbean Community



Inter-operable platform that works with a variety of locally run software programs



People throughout the region are able to access leading-edge solutions, innovations, and services that improve their livelihood.



Access to training opportunities to build geospatial capacity and utility of provided resources

# Caribbean Geoportal Webinar series

(April – August 2021)



Webinar #1:

**Learn How You Can Use  
the Caribbean GeoPortal**  
(April 21, 2021)

Webinar #2:

**Leveraging the Caribbean  
GeoPortal for Disaster  
Planning and Management**  
(June 9, 2021)

Webinar #3:

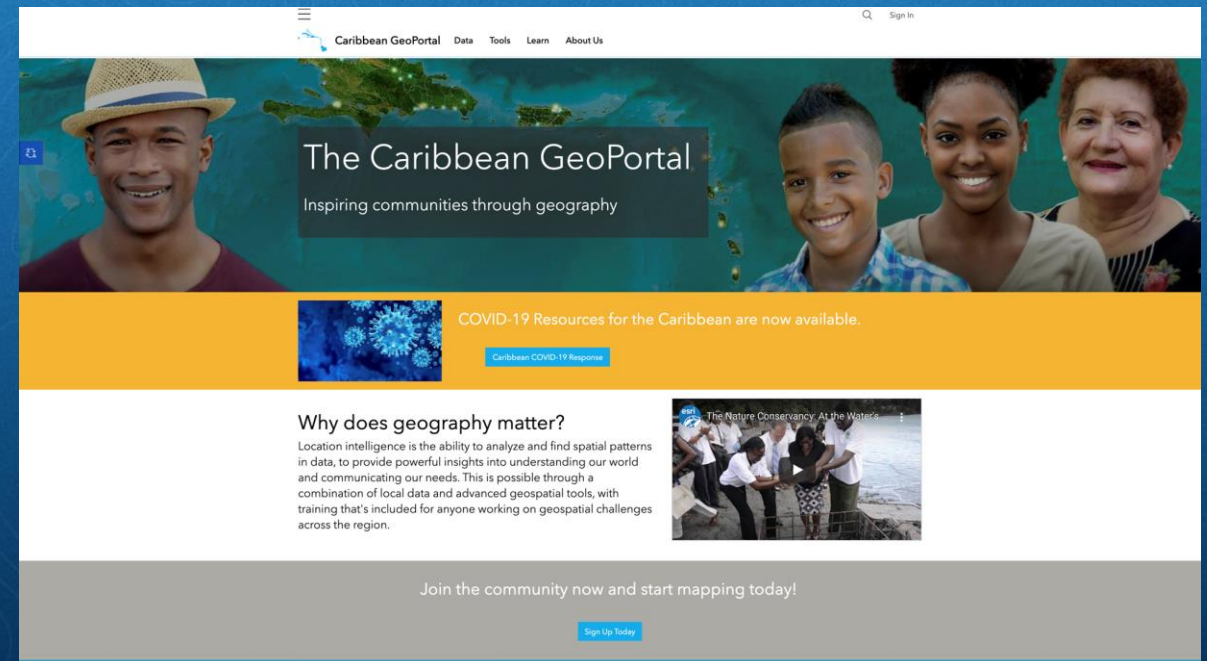
**Metadata, Maintenance &  
Best Practices on Data  
Sharing**  
(August 26, 2021)

# What is the Caribbean GeoPortal?

Roshaun Clarke

# What is the Caribbean GeoPortal?

- **An open mapping community for the Caribbean**
  - Data by Esri, Partners, Governments, other authoritative producers and the Community e.g., NOAA, NASA
  - Analytical tools for spatial data
  - Hands on software training
  - Publish your own data online
  - Field data collection tools
  - Configurable web applications



A portal built for the community – by the community

# The Caribbean GeoPortal: Tools and Content

The Caribbean GeoPortal provides full access to ArcGIS Online, providing access to tools for mapping, analytics, sharing and collaboration, and a suite of templates and field applications



## Content available includes:



Admin boundaries



Land cover



Imagery



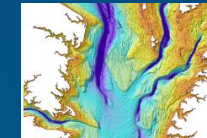
Real-time traffic



Wind & weather conditions



Demographics

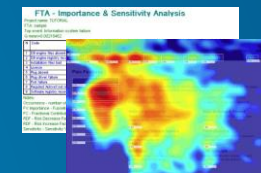


Bathymetry

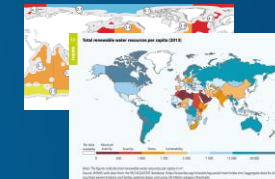


Oceans

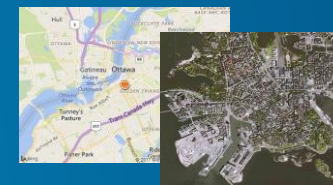
## Open Data Sources



## Community Data (Govs-NGOs-AID Orgs.)



## Commercial Data



## The Caribbean GeoPortal: Tools and Content

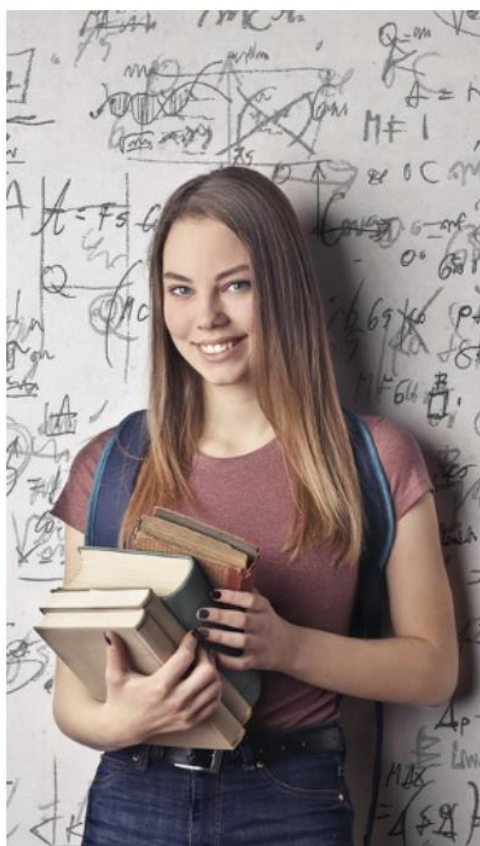
The Caribbean GeoPortal provides full access to ArcGIS Online, providing access to tools for mapping, analytics, sharing and collaboration, and a suite of templates and field applications



**Tools available provide ability to:**

- **Create web maps**
- **Apply spatial analytics**
  - **Aggregate, join, summarize, enrich**
  - **Find, Search, Geocode**
  - **Analyze patterns, calculate density**
  - **Manage data – dissolve, extract, merge and overlay**
- **Do work in the field**

# Who will use the GeoPortal?



Students



Developers

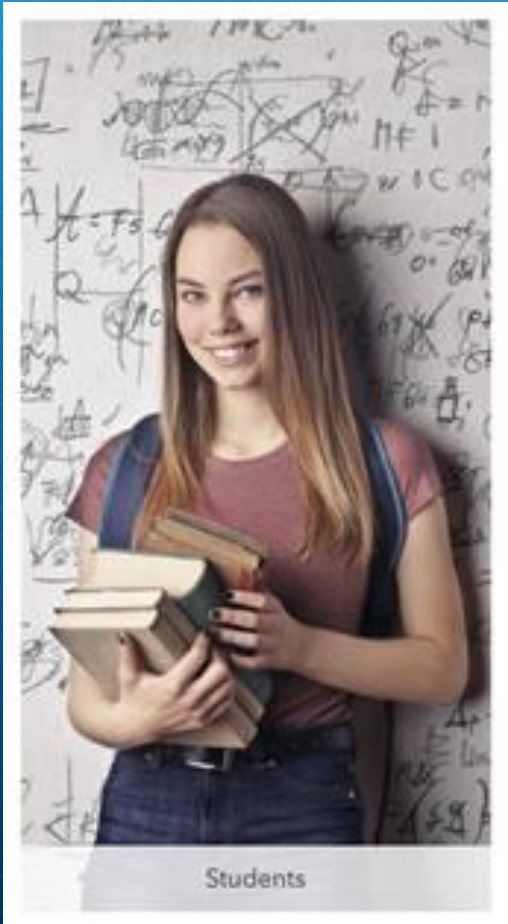


Leaders



Business Partners

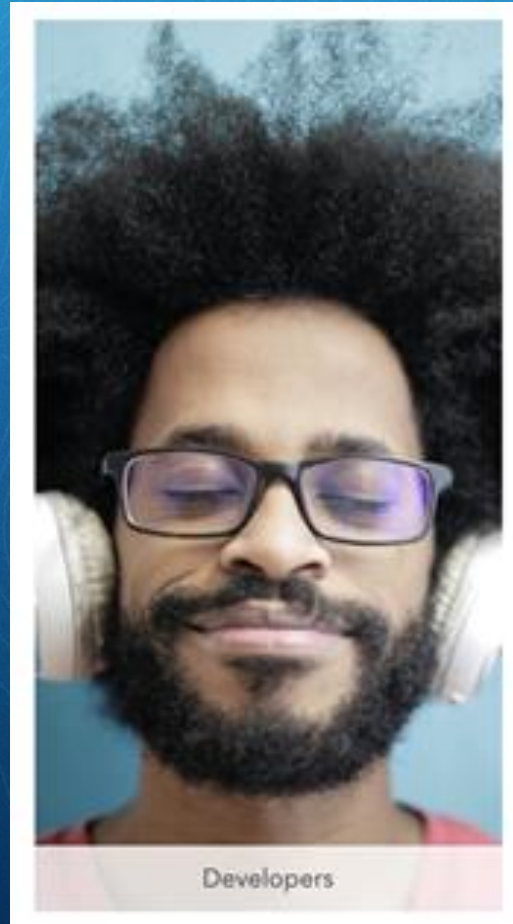
# Students



- Create and share personal projects
- Contribute work to my community
- Learn new GIS concepts and tools
- Use open data science libraries
- Long lived coursework



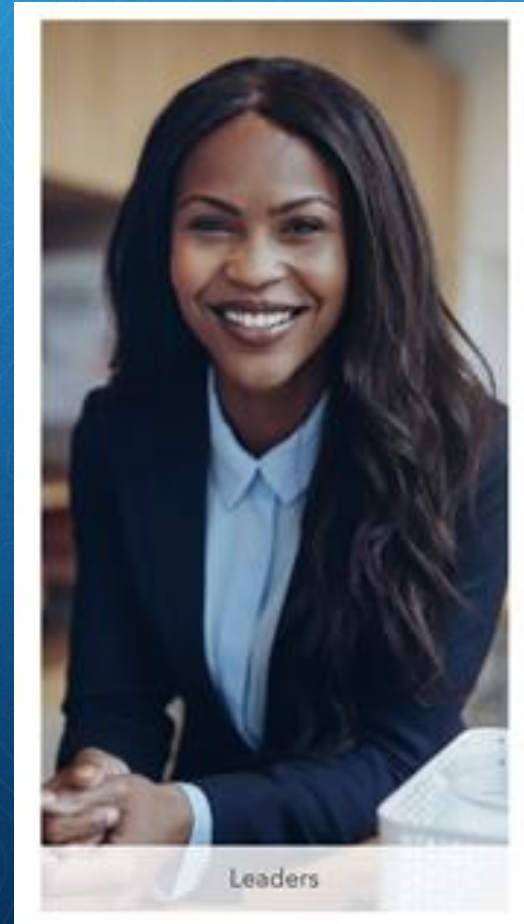
# Developers



- Create and Share Personal Projects
- Learn new GIS concepts and tools
- Work with API's & SDK's
- Use data through REST services
- Prototype applications

# Leaders

- Showcase agency work
- Share data to enabled community
- Demonstrate emergency preparedness and response
- Build community network
- Support current events



# Business Partners

- Provide and promote data products
- Build relationships with Community
- Support organization goals for public good
- Develop new solutions



### Caribbean Living Atlas

The Caribbean GeoPortal is home to hundreds of ready-to-use datasets. Some provided by Esri, others by users and Caribbean focused organizations. Mix this data with your own to build a bigger picture. Find answers and make better decisions.

### Explore the Data

Using the search bar and filtering options, you can explore the dynamic content of the Living Atlas. If you are signed in, you can bookmark interesting datasets by clicking on the blue star. You'll know it's referenced when the blue star turns yellow. Once you save datasets as your favorites you can work with them later in the Map, where you create and share maps you create!

### Geospatial Tools

The Caribbean GeoPortal gives users access to the leading geospatial tools to easily map, analyze, and share geospatial information. Combine your data with open data, apply powerful tools, and create engaging outputs. These tools are free to use for all Caribbean GeoPortal users.

### Create a web map

Quickly create maps by dropping in your spreadsheet or combining it with other location data included in the Caribbean GeoPortal. Apply smart mapping styles to make your data visually stunning. The Caribbean GeoPortal is designed to give single users free access to the best geospatial tools. Tools are continually updated with the latest technology.

[Create a Web Map](#)

### Apply spatial analytics

Intuitive analysis tools help reveal relationships and outliers, and help make predictions and determine forecasts. Use location to bring data together and analyze. Answer your first spatial question now.

[View all the tools](#)

### Take your work into the field

Easily collect data in the field using pre-built apps accessible on all devices. Collect location data or questionnaire via a range of tools. The apps work online and offline to ensure productivity anywhere. Collected data feeds straight back into the geospatial tools ready to map, analyze, and share.

The Caribbean GeoPortal gives users the power to work end-to-end. Prebuilt applications, offline navigation, and easy-to-configure tools allow for simple and structure data collection. Start your field work now.

### Access learning resources

The Caribbean GeoPortal provides users with unlimited access to the necessary training materials, enabling them to get the most from the tools and data available. Courses range from beginning to advanced.

### Available Online Training

Build capacity and learn the skills required for the jobs of tomorrow. Focus on your learning objectives in a planned training program with examples, tasks, and demo data all included. Take one of our prebuilt courses or create your own.

The Caribbean GeoPortal contains a number of powerful tools, apps, and data that you can use. Learn how to maximize each capability to reach your goals by taking your first training from Esri's online catalog which is included with your GeoPortal account.

Check out the training courses now and keep track of your learning too.

[View Training Catalog](#)

### New to geospatial or GIS?

During a time of crisis, having access to the most current and authoritative data can be the difference between life and death. Whether the crisis is caused by storms, earthquakes, or disease, the Caribbean GeoPortal will provide the necessary data and application templates to help our community respond.

### Disaster Response

#### COVID-19

See how the region is monitoring the spread of COVID-19 and view detailed country information on available dashboards. Explore the different templates and solutions that are available to help your community, or if you need more you can request help from the Esri Disaster Response Program.

[COVID-19 Page](#)

### Hurricane and Cyclones

This map describes the current & recent location of tropical storms, as well as forecast positions and probable track of tropical storms. The area currently covered by the live feeds are the Atlantic and Eastern Pacific, the Central Pacific (Hawaii, etc.), and the Western Pacific and Indian Ocean. The data sources are the National Hurricane Center, Central Pacific Hurricane Center and Joint Typhoon Warning Center.

[Open the App](#)

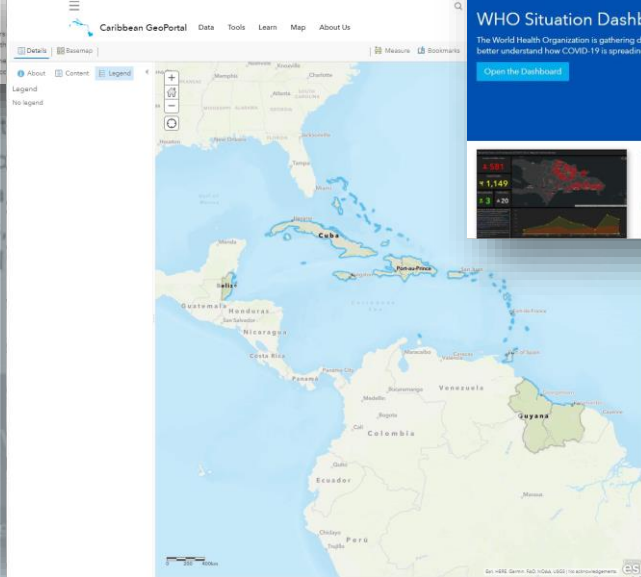
### Recent Earthquakes Layer

This service presents recent earthquake information from the USGS Prompt Assessment of Global Earthquakes for Response (PAGER) program. In addition to displaying earthquakes by magnitude, this service also provides earthquake impact details. Impact is measured by population as well as models for economic and fatality loss. For more details, see: PAGER Alerts. Events are updated as frequently as every 5 minutes.

[View the Layer](#)

### Damage Assessment

Bahamas Before & After Satelite Map



### COVID-19 Response

#### Monitoring Coronavirus in the Caribbean

Confirmed Cases	Recovered	Deaths
8,129	1,388	396

Source: Coronavirus COVID-19 Caribbean Cases

Source: Coronavirus COVID-19 Caribbean Cases

Source: Coronavirus COVID-19 Caribbean Cases

**Food Security & Livelihoods Impact Survey**

Thank you for taking part in this regional survey for the Caribbean. Your participation will play a large part in providing an overview of the impact of COVID-19 on food security and livelihoods in your country or territory.

[Take the Survey](#)

**WHO Situation Dashboard**

The World Health Organization is gathering data and providing this critical information in a global dashboard for us to better understand how COVID-19 is spreading.

[Open the Dashboard](#)



# Information on Disasters



## Earth Observation


NASA's fleet of Earth satellites can provide a wealth of information before, during and after a disaster.



NASA Earth Science  
**DISASTERS PROGRAM**

## Disaster Response


When disasters occur, our team provides users access to critical imagery, data and damage assessments. This information flow enables decision-makers to make real-time decisions that save lives and mitigate disaster impacts. We work with a network of partners and volunteers to provide guidance for action when communities face disaster.




## COVID-19 Response

Monitoring Coronavirus in the Caribbean

Confirmed Cases	Recovered	Deaths
649,027	420,570	8,854
Source: Coronavirus COVID-19 Caribbean Cases	Source: Coronavirus COVID-19 Caribbean Cases	Source: Coronavirus COVID-19 Caribbean Cases



**CARICOM**  
CARIBBEAN COMMUNITY  
*A Community for All*



**World Food Programme**

CARICOM is launching the second round of the Caribbean COVID-19 Food Security and Livelihoods Survey. Following the April 2020 survey that highlighted disruption to livelihoods and impacts on food security in the initial stages of the COVID-19 response, this round aims to capture the current state of affairs and analyse how livelihoods, food security and markets have shifted over the past few months. The survey is open to all CARICOM Member States and Associate Members, as well as Aruba, Curacao and Sint Maarten between 22 June – 6 July 2020.


## Hurricane and Cyclones

This map describes the current & recent location of tropical storms, as well as forecast positions and probable track of tropical storms. The areas currently covered by the live feeds are the Atlantic and Eastern Pacific, the Central Pacific (Hawaii, etc.), and the Western Pacific and Indian Ocean. The data sources are the National Hurricane Center, Central Pacific Hurricane Center and Joint Typhoon Warning Center.

Open the App

## Hurricane and Cyclones App





## Recent Earthquakes Layer

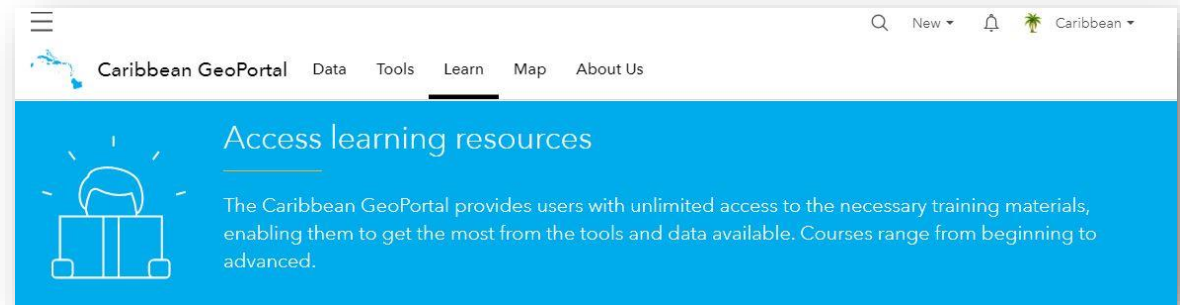
This service presents recent earthquake information from the USGS Prompt Assessment of Global Earthquakes for Response (PAGER) program. In addition to displaying earthquakes by magnitude, this service also provide earthquake impact details. Impact is measured by population as well as models for economic and fatality loss. For more details, see: PAGER Alerts. Events are updated as frequently as every 5 minutes.

View the Layer

## Recent Earthquakes

# The Caribbean GeoPortal: Learning

The Caribbean GeoPortal also provides access to learning – using learn lessons – users will have access to a library of free lessons in multiple languages



## New to geospatial or GIS?

If you are new to the subject of geospatial, GIS, and spatial analytics, don't worry, there are introductory learning materials.

The Caribbean GeoPortal is a platform for new and experienced users. It brings learning together with tools and data to provide users with everything they need to get started. Discover what geospatial technology and GIS can achieve.



## The GeoPortal Vision & Objectives

The vision is to provide a 'one stop shop' portal for geographic content and comprehensive web GIS tools, free for single users residing in, supporting efforts, or working in the region.



*This will:*

Remove the barriers to entry to geospatial technology, data and learning for users working in the region

Enable a sustainable portal of portals for existing and new geospatial data focused in the region

Provide a portal built for the community – by the community



“

*We are deeply committed to supporting innovation in the Caribbean, helping users discover, explore, and understand the vast information available to them through the power of maps*

”

**Jack Dangermond**

**President and Founder of Esri**



**Open Q/A**

# Poll Question

Please Tick the Boxes that Apply to You



# Facilitate Discussion and Demonstrations

Sean McGinnis and Roshaun Clarke

# How to sign in to Caribbean GeoPortal

- **Need to sign up from scratch?**

Join the community now and start mapping today!

Sign Up Today

- **Already have an ArcGIS online Account?**
- **I have a university account - can I use that?**

Create a Caribbean GeoPortal account



A Caribbean GeoPortal account allows you to:

- Follow initiatives and events for updates
- Sign up to attend events
- Create web maps and story maps

First name

Last name

Email

Confirm email

Review the [Esri Master Agreement](#) and [Privacy Policy](#)

[Review the Esri Master Agreement and Privacy Policy in other select languages](#)

I accept and agree to be legally bound by

Esri Master Agreement

Esri ArcGIS Online Privacy Policy


Next



Facebook




Google


 Sign in with Google

## Choose an account

to continue to [ArcGIS Online](#)

 **Sean McGinnis**  
seankmcginnis@gmail.com

---

 Use another account

---

To continue, Google will share your name, email address, language preference, and profile picture with ArcGIS Online. Before using this app, you can review ArcGIS Online's [privacy policy](#) and terms of service.

English (United States) ▾ [Help](#) [Privacy](#) [Terms](#)

## Create ArcGIS Account

**Username**  
seankmcginnisCarib ✓

We've selected this username for you. You can change it if you want.

The username must:

- ✓ Be between 6 and 128 characters in length
- ✓ Not include special characters other than . (dot), \_ (underscore), @ (at sign), and - (hyphen)
- ✓ Not include a . (dot), - (hyphen), \_ (underscore) or @ (at sign) as the first or last character of the username
- ✓ Not include spaces

Review the [Esri Master Agreement](#) and [Privacy Policy](#)

[Review the Esri Master Agreement and Privacy Policy in other select languages](#)

I accept and agree to be legally bound by

- Esri Master Agreement
- Esri ArcGIS Online Privacy Policy

[Cancel](#) [Create account](#)

**Open Q/A**

## Questions

Q1) Do I need to pay to use any of the tools provided in the Caribbean GeoPortal?

A) **No**, there is no cost to use the GeoPortal.

Q2) My Office doesn't use any Esri technology, can I still participate in this mapping community?

A) **Yes**, the GeoPortal program is an open mapping community with no requirements on being an Esri customer.

Q3) Do I have to have an ArcGIS Online account to use the GeoPortal?

A) **No**. You can create a free account when you join the community.

Q4) I already have access to ArcGIS Online at work (organization account) or at home (personal account) , how do I use the Caribbean GeoPortal?

A) If you already have an ArcGIS Account for your professional work or have a public account, you can share your data and applications with the community.

If you already have an ArcGIS Account but want to do some **personal** mapping to help the community, the GeoPortal is a place where your project can live and be accessible to the public.

## Questions

Q5) I don't use Esri technology today but use open source GIS how can this help me?

*A) The data you upload to the GeoPortal is your data, and it can be accessed through a variety of web API's or open file formats for use in the application of your choice and made accessible to the community.*

Q6) I use QGIS for my desktop GIS, how do I create and use content from the Caribbean GeoPortal?

*A) With your GeoPortal Account you can upload shapefiles that are in a .zip file or you can upload GeoJSON files, to create web services. These web services can be added to QGIS using the ArcGIS Feature Server connection.*

Q7) Can Caribbean software developers embed content into their applications?

*A) **Yes**, all the services (content) shared on the geoportal are RESTful web services.*

Q8) Can I add my own data (Shapefiles) and mesh it up with Geoportal content?

*A) **Yes**.*

Q9) How large a file can I upload?

*A) You can upload files up to 200 GB in size to My Content through a web browser.*

Q10) Can we download data from the Geoportal?

*A) **Yes**, unless the data provider prohibits download capability.*



## Questions

Q11) Do common search engines find the items I've added to Caribbean GeoPortal?

A) **Yes.** *Items that are uploaded and shared as public are automatically indexed by popular search engines and can be discovered by common search methods. If you are on the website, you can also use its search function to find items.*

Q12) Can users compose/classify maps on the GeoPortal?

A) **Yes.** *Smart Mapping functionality is available as well.*

Q13) Can I share 3D geometry in feature layers?

A) **Yes**

Q14) I might want to stand up a country page - how does that work?

A) *Country Pages are a great way to share authoritative data and applications with the community. To set one up, reach out to the Caribbean GeoPortal team. There is no charge for participating at this level, but we do want a mutual understanding that you have the rights to share the authoritative data and the data will be updated and maintained.*

## Questions

Q15) Does my subscription to the Caribbean GeoPortal time out?

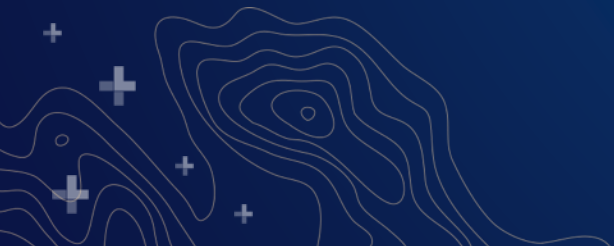
*A) NO!*

Q16) What tools does the portal provide?

*A) There are 30+ Geospatial Analytic services that are available, as well as data hosting, geocoding, routing and more. These tools cover some of the most common needs, and advanced developers can use a variety of open data science libraries that are available through jupyter notebooks.*

# Poll Question

Please Tick the Boxes that Apply to You



# Hands on

Sean McGinnis

# Crowd Source Community Survey and Map

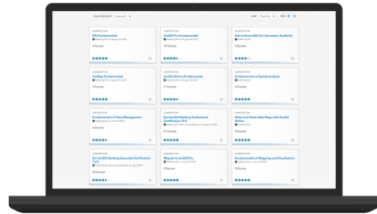
[Join the Community](#)

# Case Study

Taiwo Ogunwumi

# Getting Started with the African Geoportal

<https://www.esri.com/training/catalog/5c5b28092c10d337f917a20f/get-started-with-the-africa-geoportal/>



## Training tailored for you

Access training that fits your needs. Focus on your learning objectives in a planned training program with examples, tasks, and demo data all included. Take one of our prebuilt courses or create your own.

The Africa GeoPortal contains a number of powerful tools, apps, and data. Learn how to maximize each use to reach your goals by taking your first training. Check out the training courses now and keep track of your learning too. Sign up for a free Africa Geoportal account to check out the training courses now and keep track of your learning too.

[Start your first training](#)

VIDEO	<a href="#">Africa GeoPortal: Add Data</a>	3 Minutes	Free	♡ ⊕	🌐🌐🌐🌐🌐 (296)
VIDEO	<a href="#">Africa GeoPortal: Create a Web Map</a>	4 Minutes	Free	♡ ⊕	🌐🌐🌐🌐🌐 (191)
VIDEO	<a href="#">Africa GeoPortal: Configure Pop-ups</a>	3 Minutes	Free	♡ ⊕	🌐🌐🌐🌐🌐 (141)
VIDEO	<a href="#">Africa GeoPortal: Style Your Map Layers</a>	3 Minutes	Free	♡ ⊕	🌐🌐🌐🌐🌐 (253)

Course Catalog Courses by Schedule Courses by Location New and Retired Training Learning Plans

Get the latest information on training and certification during coronavirus disease 2019 (COVID-19).

## Learning Plan

### Get Started with the Africa GeoPortal

Created by Esri on February 6, 2019

Enroll 🌐🌐🌐🌐🌐 (17) ♡ 📄 🗑️ 563 Learners Enrolled

## About this Plan

Discover Africa using location intelligence.

VIDEO	<a href="#">Africa GeoPortal: Create a Data Collection Survey</a>	3 Minutes	Free	♡ ⊕
VIDEO	<a href="#">Africa GeoPortal: Collect Data Using a Survey</a>	2 Minutes	Free	♡ ⊕
VIDEO	<a href="#">Africa GeoPortal: Prepare a Map for Field Data Collection</a>	3 Minutes	Free	♡ ⊕
VIDEO	<a href="#">Africa GeoPortal: Collect Field Data</a>	2 Minutes	Free	♡ ⊕

# ArcGIS StoryMap

There were numerous hazard occurrence at my neighbourhood ranging from Flooding, Landslide and Fire. Hence, the need to communicate the role of Citizens in responding to hazardous events.

<https://storymaps.arcgis.com/stories/4583ad2d5cc745b5996ef0e436f5f4b2>

IN THE EVENT OF DISASTER OCCURRENCE



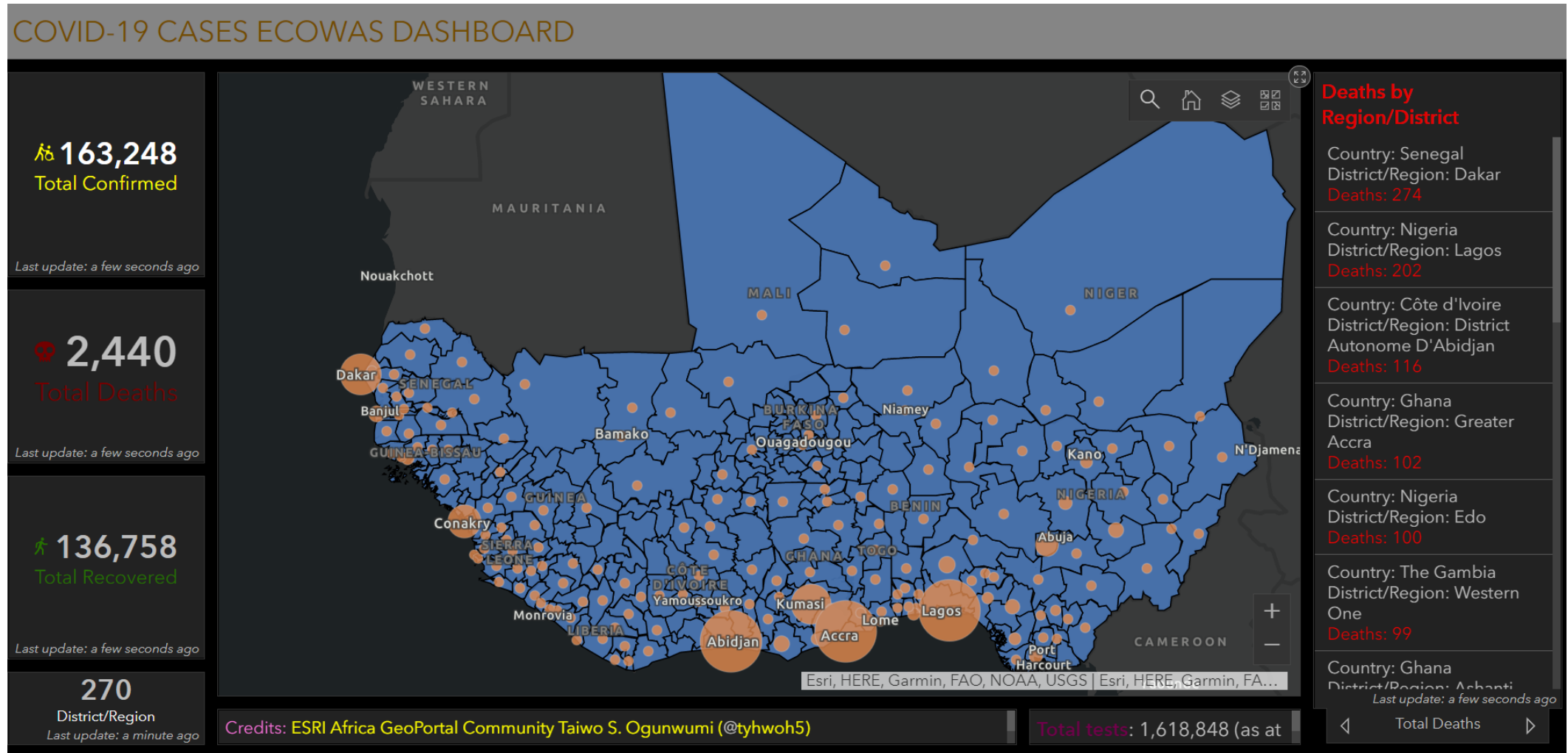
“



# ArcGIS DASHBOARD

Fast forward to the emergent of Covid-19 I co-worked with a friend to develop an Interactive Dashboard to help communicate Covid-19 cases and guide health care, government and community to make effective decision.

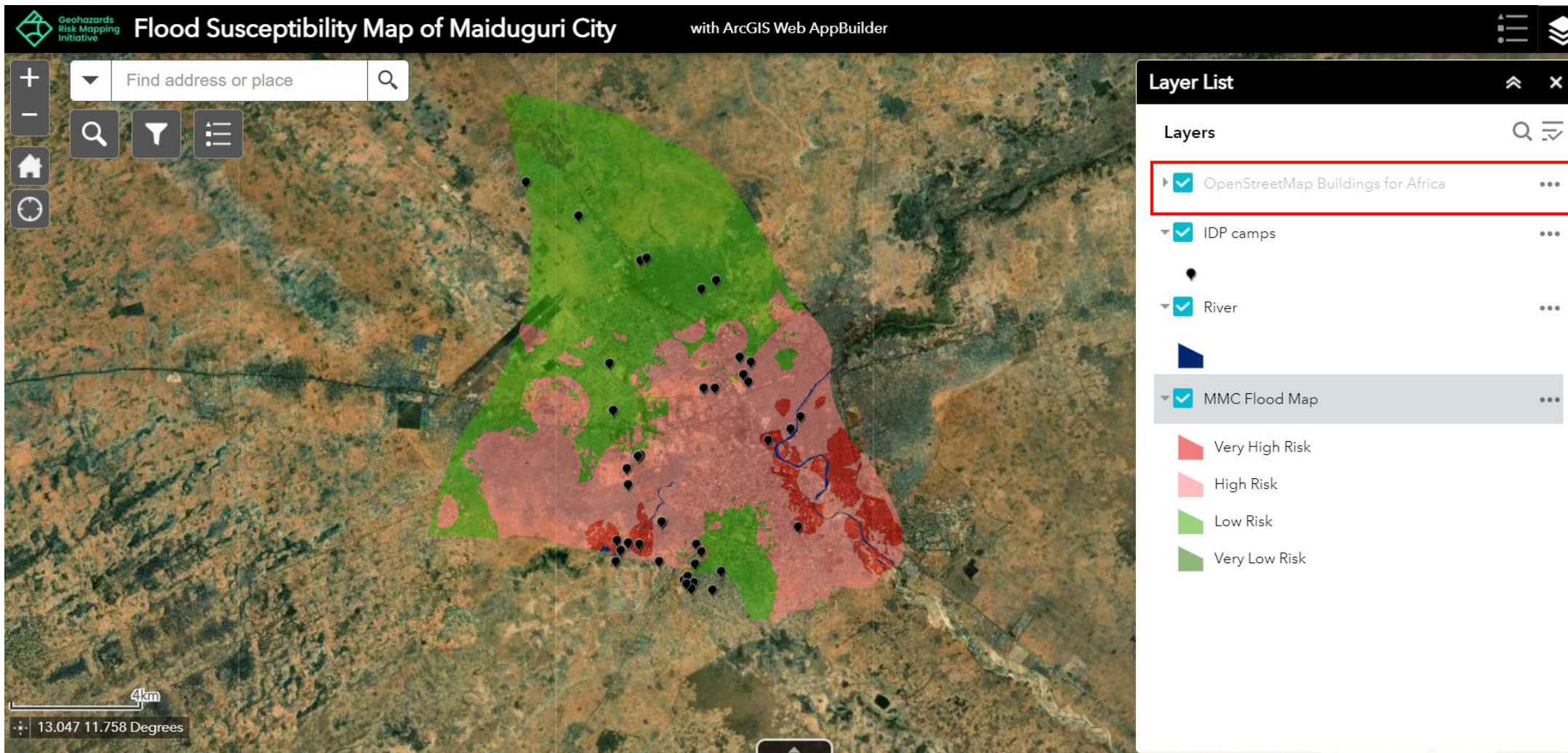
<https://africageoportal.maps.arcgis.com/apps/opsdashboard/index.html#/a6c43cc41a3c4774a97997a3ab5fa9d4>



# ArcGIS Web AppBuilder

To support in addressing the issue of consistent Flooding in part of Nigeria. I used the Geoportal to create Early warning Flood Maps (Showing various IDP campsites that are vulnerable to Flooding in Maiduguri). Added the Openstreetmap layers capability available through Africa geoportal.

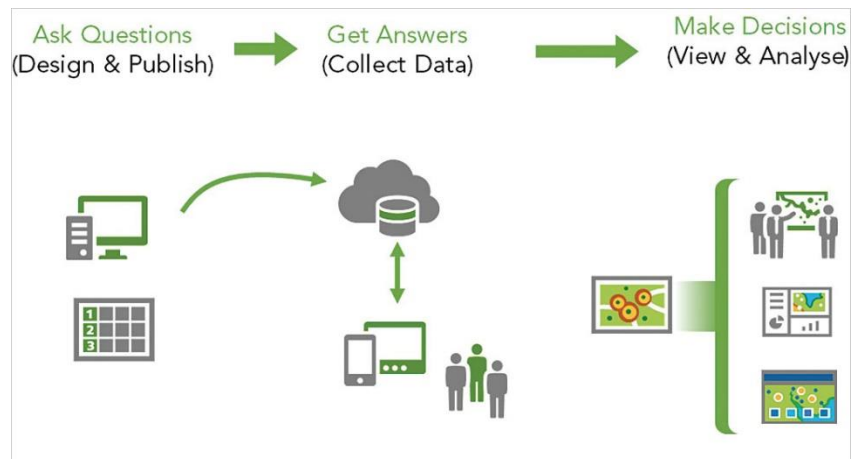
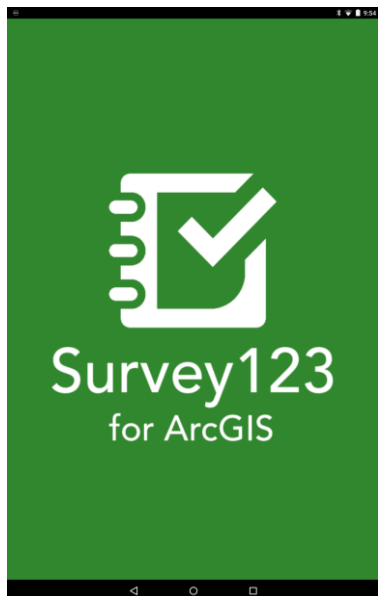
<https://africageoportal.maps.arcgis.com/apps/webappviewer/index.html?id=7cba8204d65c4ceda63c7c89e632606b>



# Survey123 App

To aid quick flood response and for future early warning, I make use of the Africageoportal platform to develop a Survey app (using either web or mobile device) that can be used by the community member to record flood events.

<https://arcg.is/1rSqv1>



Reset Saved

The information you filled in will help NEMA/SEMA to respond to flood events and to aid future flood early warning.

**Type the date and time of the flooding occurrence.\***

m/d/yyyy hh:mm

**Settlement/Community/Area name\***  
Please type the name of the area that is flooded.

**Local Govt Area name**  
Specify the name of LGA of the flooded area. (you can skip if you don't know)

**State name of the flooded area\***


Abia State  Adamawa State  Akwa Ibom State

Anambra State  Bauchi State  Bayelsa State

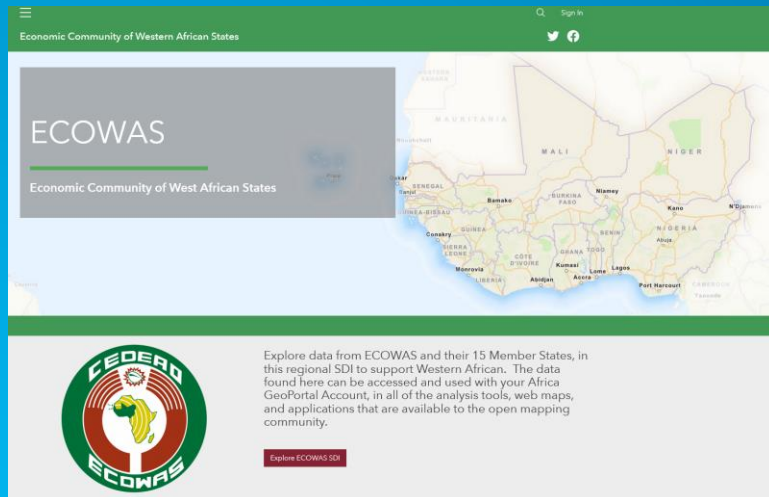
Benue State  Borno State  Cross River State

**Open Q/A**

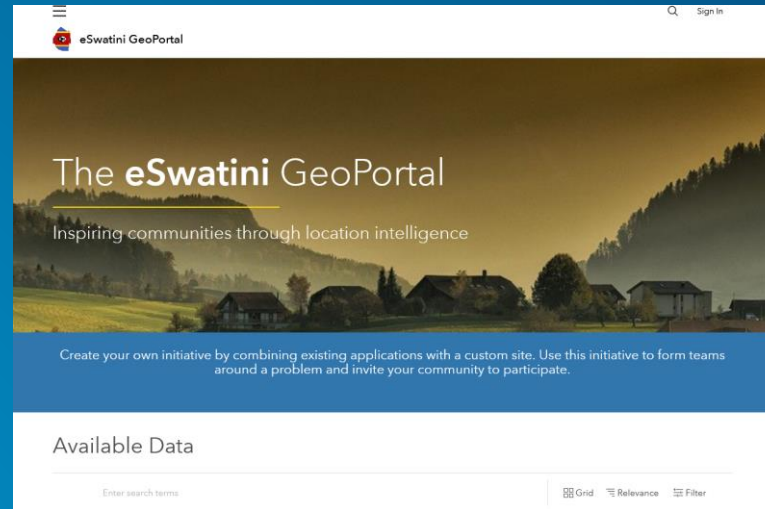
# Example use in community



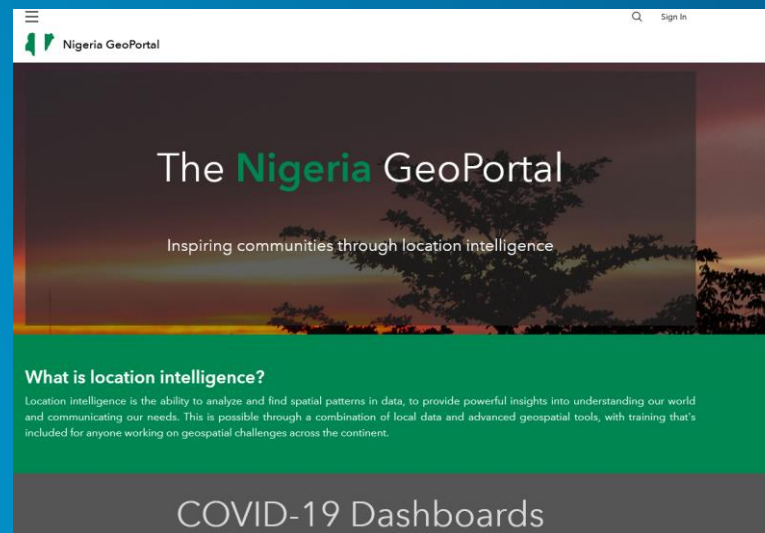
The RCMRD Geoportal homepage features a dark blue background with a network of glowing blue lines. The main heading is "Mapping for Sustainable Development". Below this is a horizontal row of 20 national flags representing the RCMRD member states. A prominent section titled "2020 RCMRD Map Competition" includes the subtitle "On the Impact of Land Use and Communities" and a "Competition Closed" status. A "Learn More" button is located at the bottom of this section.



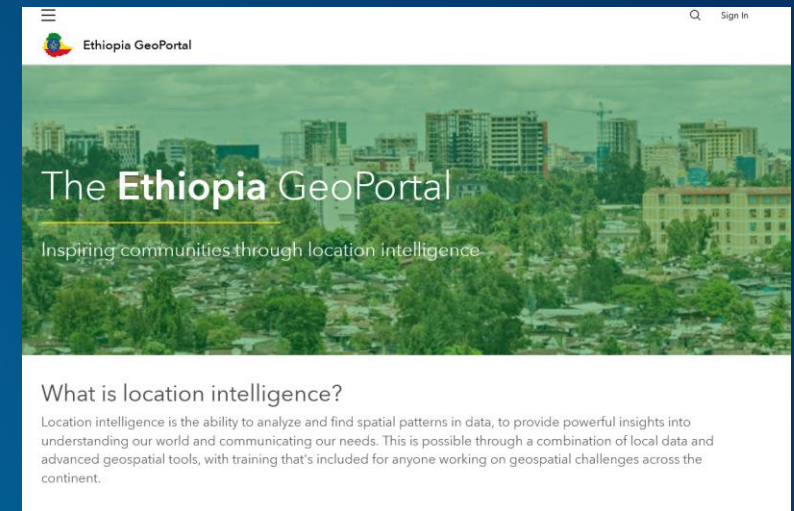
The ECOWAS Geoportal homepage has a green header with the text "Economic Community of Western African States". The main content area features a map of West Africa with country names labeled. Below the map is the ECOWAS logo and a text block that reads: "Explore data from ECOWAS and their 15 Member States, in this regional SDI to support Western African. The data found here can be accessed and used with your Africa GeoPortal Account, in all of the analysis tools, web maps, and applications that are available to the open mapping community." A "Explore ECOWAS SDI" button is positioned at the bottom right.



The eSwatini GeoPortal homepage features a landscape image of a rural area with houses and trees. The main heading is "The eSwatini GeoPortal" with the tagline "Inspiring communities through location intelligence". Below this is a call to action: "Create your own initiative by combining existing applications with a custom site. Use this initiative to form teams around a problem and invite your community to participate." A section titled "Available Data" includes a search bar and filters for "Grid", "Relevance", and "Filter".



The Nigeria GeoPortal homepage features a sunset background with silhouettes of trees. The main heading is "The Nigeria GeoPortal" with the tagline "Inspiring communities through location intelligence". A section titled "What is location intelligence?" provides a definition: "Location intelligence is the ability to analyze and find spatial patterns in data, to provide powerful insights into understanding our world and communicating our needs. This is possible through a combination of local data and advanced geospatial tools, with training that's included for anyone working on geospatial challenges across the continent." At the bottom, there is a section for "COVID-19 Dashboards".



The Ethiopia GeoPortal homepage features a cityscape background. The main heading is "The Ethiopia GeoPortal" with the tagline "Inspiring communities through location intelligence". A section titled "What is location intelligence?" defines the concept: "Location intelligence is the ability to analyze and find spatial patterns in data, to provide powerful insights into understanding our world and communicating our needs. This is possible through a combination of local data and advanced geospatial tools, with training that's included for anyone working on geospatial challenges across the continent."



The Côte d'Ivoire Geoportal homepage features an aerial view of a city. The main heading is "Le Géoportail de la Côte d'Ivoire". A text block states: "Le Géoportail de la Côte d'Ivoire s'appuie sur les référentiels du BNETD et sur des producteurs de données institutionnels et privées pour vous proposer une information fiable sur le pays. Découvrez comment les communautés s'inspirent des informations de localisation et partagent leurs contenus." Below this is the BNETD logo and a section titled "L'importance de l'information géospatiale" which explains the value of geospatial information.



The Senegal Geoportal homepage features a beach scene with palm trees. The main heading is "Le Géoportail du Sénégal". A text block states: "Le Géoportail du Sénégal s'appuie sur les référentiels de l'ANAT et de l'ANSD et sur des producteurs de données institutionnels et privées pour vous proposer une information fiable sur le pays. Découvrez comment les communautés s'inspirent des informations de localisation et partagent leurs contenus." Below this is the ANAT logo and a section titled "L'importance de l'information géospatiale" which explains the value of geospatial information.

# Conclusions

Simone Lloyd

# Conclusion



- The Caribbean Geospatial Development Initiative (GARIGEO) Steering Committee through ESRI has provided this platform for the Caribbean Community
- Encourage exploration of the tools, functionalities and data available
- Encourage open use, upload, sharing and analysis of data relevant to the region
- Encourage utility of platform to support decision making throughout the region
- Supporting geospatial capacity building via platform and webinar series

# Caribbean Geoportal Webinar series

(April – August 2021)



**Webinar #1:**  
**Learn How You Can Use  
the Caribbean GeoPortal**  
(April 21, 2021)

**Webinar #2:**  
**Leveraging the Caribbean  
GeoPortal for Disaster  
Planning and Management**  
(June 9, 2021)

**Webinar #3:**  
**Metadata, Maintenance &  
Best Practices on Data  
Sharing**  
(August 26, 2021)

Sign up [here](#) today for webinar #2





# Caribbean GeoPortal



How will you use it?

<https://www.caribbeangeoportal.com>

Sign up [here](#) today for webinar #2 June 9<sup>th</sup> focus on disasters

